

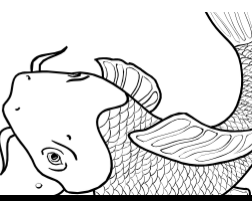


LOGISTICS CONSULTING

Executive Search, Talent Hunting
& Logistics Consultancies

Chile · Bolivia · Perú · Argentina





THIS IS WHO WE ARE...

For more than 20 years, the people of our team have worked as part of the **TRANSPORT & LOGISTICS INDUSTRY**.

Our jobs, responsibilities, activities, experiences, and travels under professional assignments, gave us along the years, the necessary knowledge, understanding and a 360° vision about this business field.

Executive and field experiences permitted us to understand the needs and requirements of all those companies acting as players in this particular industry.

So, in **2009** we conceived TINNK® as a Logistics Consulting Company focused on International Transportation and Logistic Operations with strong expertise in the **LATIN AMERICAN WEST COAST**.

Tinnk Consulting is a group of professionals committed to

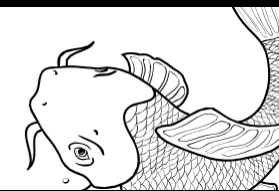
Provide our clients Customized Services .

Believe in Adaptability, Mobility & Flexibility.

Deliver our services based on Multicultural LATAM Markets knowledge.



**WE ARE PROFESSIONALS
ASSISTING PROFESSIONALS.**



THIS ARE OUR 4 INNER CORES ...

1.- PURPOSE

Become trusted advisors and effective providers to our Clients.

"Our client's growth is our own growth".

2.- VISION

Share our vision, experience and expertise with our clients. Create solid bonds based on successful results.

Provide customized solutions across executive search, business development consulting and multi-culture shaping.

3.- VALUES

Act and work professionally and ethically.

The earning of the respect and trust of our clients, assure our success.

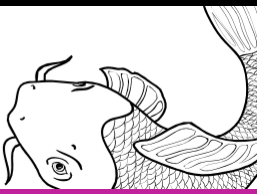
4.- WORK

· Executive Search & Recruitment.

· Network Development Support.

· Procurement & Business Consulting.





THIS IS WHAT WE DO...

Executive Search & Recruitment



Executive Search,
Talent Identification,
Head Hunting,
Executive Recruitment.

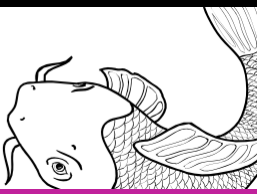
Professional, Technical and
Psychologic testing. Graphology,
Aptitudes, Capabilities and Language
testing.

National and Regional Cross
Checking Information about
specific professional profiles and
human capital.

Market study and Analysis.
Our focus: Freight Forwarders,
NVOCCs, Shipping Companies, Airlines,
and Contract Logistics Operators
Companies. t

We deliver efficient and Accurate
information about technical &
professional profiles and human
capital.

H.R Selection, Recruitment,
Training, Cross Functional
Coordination.



THIS IS WHAT WE PROVIDE...

Network Development Support
Procurement & Business
Consulting



Specific Market
Researches for
Feasibility &
Profitability.

Market analysis for
Commercial and Operation
procedures.

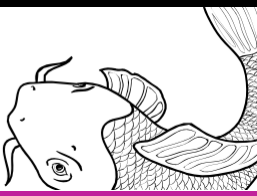
New offices, Branch
Offices Set-ups and
Start-up processes.

Relocation services and In-
country assistance
(for international executives and
families arriving to Chile, Bolivia,
Argentina and Perú).

Search and Find Options
for Agency Agreements.

Tax, labor and Accounting
Consultancies (we provide 3rd
party professional and
experts services).

Specific Customs Regulations
Consultancies.



THIS IS WHAT WE DELIVER...

re·search¹ /rɪˈsɜːtʃ/,
[plural] 1 serious st- /n [U] also
discover new facts subject, that
new ideas
acer | resea

Professional Knowledge and expertise on International Trading, Transport & Logistics.

High level of information concerning local and regional markets related to Transport & Logistics.

Multicultural (Latin America West Coast countries) social and economics understanding.

Well-educated, serious and professional working team (Spanish, English, Deutch and French spoken).

Efficient, accurate and proper information about professional profiles.



THIS IS OUR COMMITMENT...



To act and work professionally and ethically on any scenario and circumstances

To become permanent responsible, effective and trusted advisors & providers to our Clients.

To work consistently, with transparency, with respect and with non-discrimination in all our procedures.

To deliver a clear information, exposure and explanation about our findings and level of progress in our customer's mandates.



THIS IS WHERE WE ARE...



Santiago - Chile **Tinnk®**
Head Office.



Santa Cruz - Bolivia
Tinnk Branch Office



Lima - Perú
Tinnk Branch Office



Argentina & Ecuador
Agents Partnerships

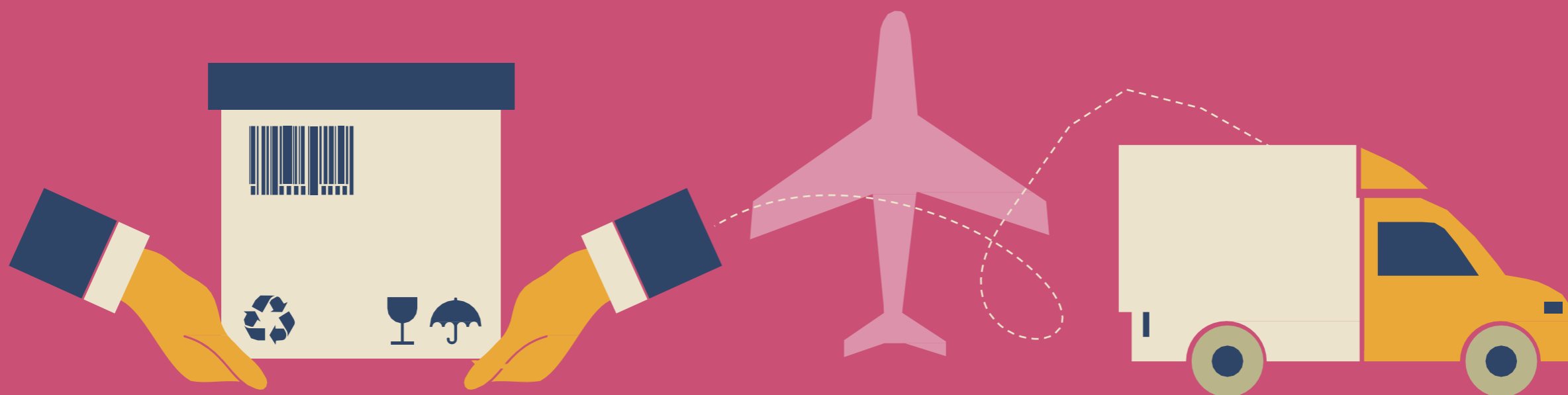


Sao Paulo - Brazil Collaboration
Partnership Agreement
with **Gluck Consultoria**





THIS IS WHO TRUST ON US...



- DAMCO
- DB SCHENKER GEODIS LESCHACO
- HELLMANN WORLDWIDE LOGISTICS
- BROOM GROUP

- MAERSK LINE
- EXPEDITORS
- BDP INTERNATIONAL MODALTRADE
- GLOBAL LOGISTICS SKECHERS CHILE
- DEUGRO

- J.F. HILLEBRAND
- MASTERLINE LOGISTICS
- JAS PROJECTS
- CEVA LOGISTICS
- VANGUARD LOGISTICS
- **AMONG OTHERS...**



THANK YOU VERY MUCH FOR YOUR TIME!

Gabriel Bedregal
Managing Director

Karl Ruzsitka
Associated Partner

Legal Entity

Consultora Inner Koi Chile SpA. R.U.T.:
76.090.567-4

Legal Address

Cerro el Plomo 5931, Unit 510.
Las Condes. Santiago de Chile.

Mobile and WSP

+569 9227 3952

info@tinnk.com

www.tinnk.com